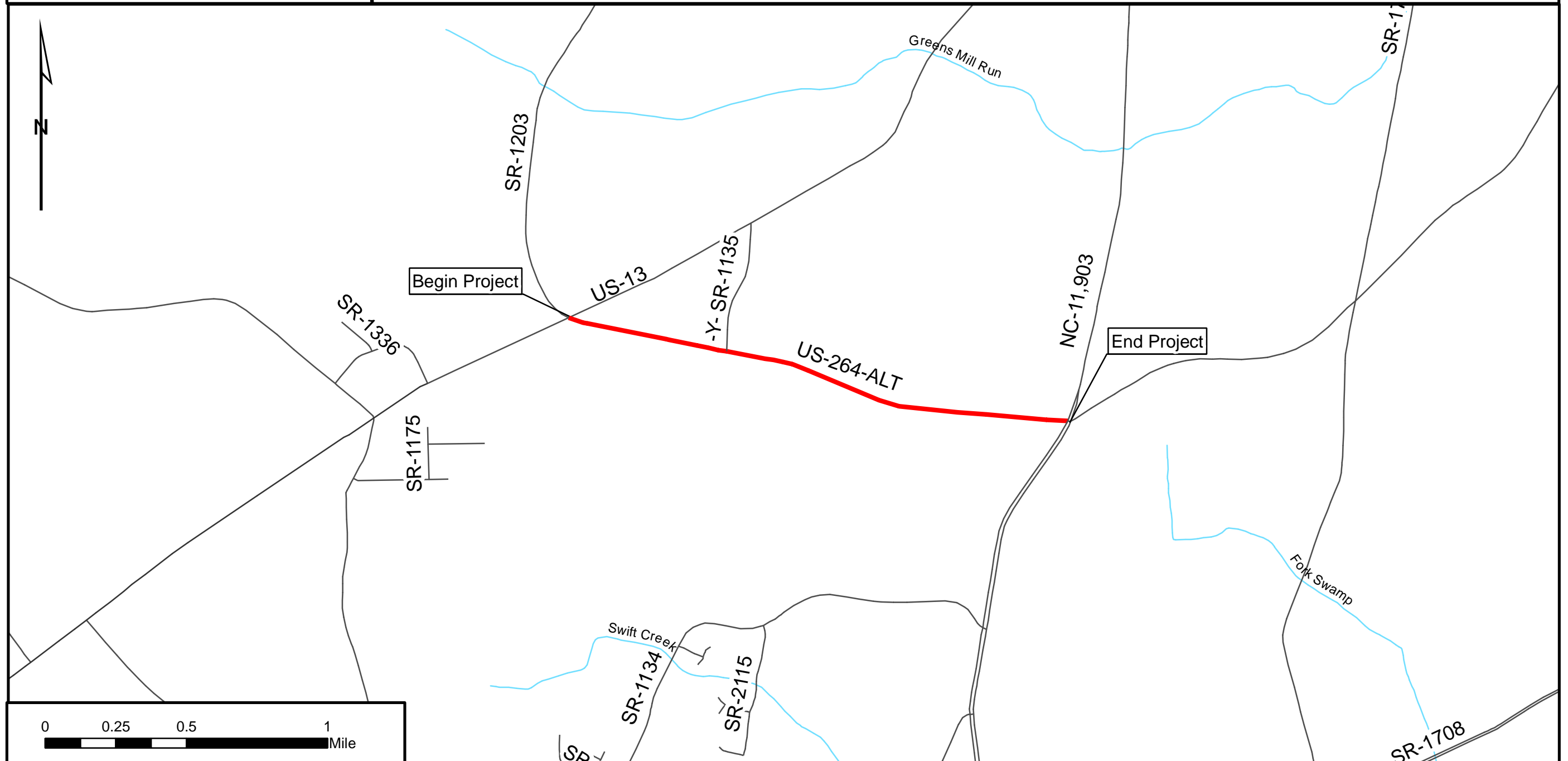


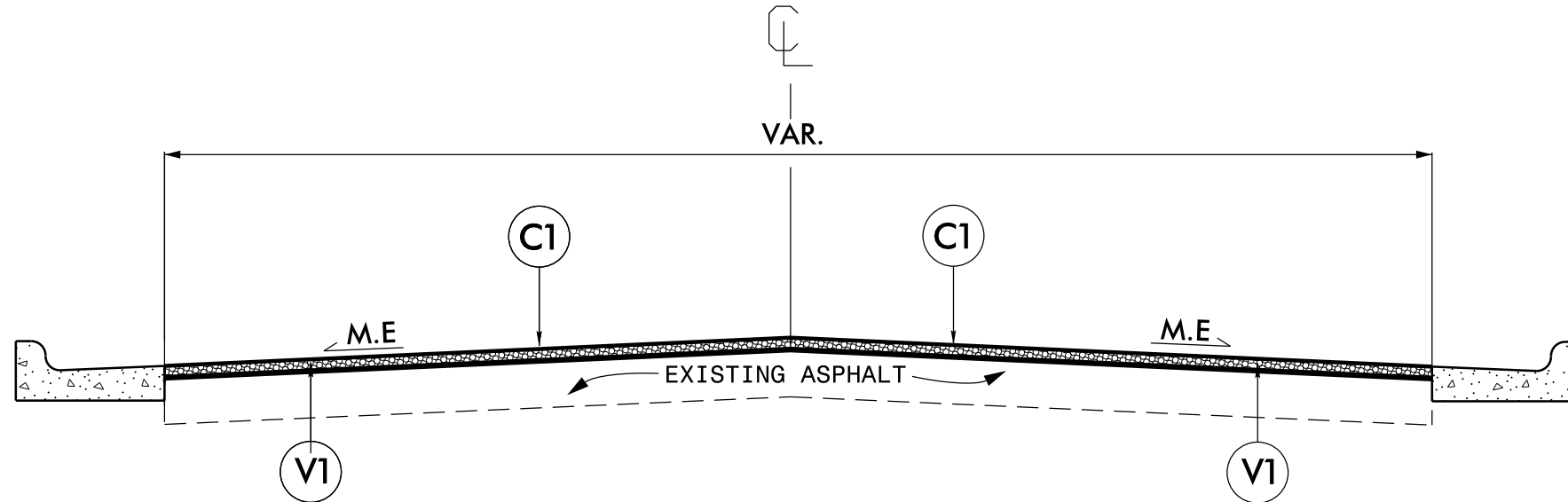
PITT COUNTY

WBS: 2016CPT.02.08.10741.6
Mill and Resurface US 264-Alt from US 13 (Dickinson Ave.) to NC 11 (Memorial Dr.)



TYPICAL SECTION NO. 1

US 264-ALT FROM US13 (DICKINSON AVE.) TO NC11 (MEMORIAL DR.)



NOTE:

1. MILL FULL WIDTH OF EXISTING ASPHALT PAVEMENT, AS DIRECTED BY THE ENGINEER.
2. PLACE ASPHALT SURFACE COURSE AT FULL WIDTH OF EXISTING ASPHALT PAVEMENT, AS DIRECTED BY THE ENGINEER.

NOTE: PAVEMENT EDGE SLOPES ARE 1:1 UNLESS SHOWN OTHERWISE.

PAVEMENT SCHEDULE	
C1	PROP. APPROX. 2" ASPHALT CONCRETE SURFACE COURSE, TYPE S9.5B, AT AN AVERAGE RATE OF 224 LBS. PER SQ. YD.
V1	MILLING DEPTH 0" - 2" FOR THE WIDTH OF ROADWAY.
DRAWINGS NOT TO SCALE	

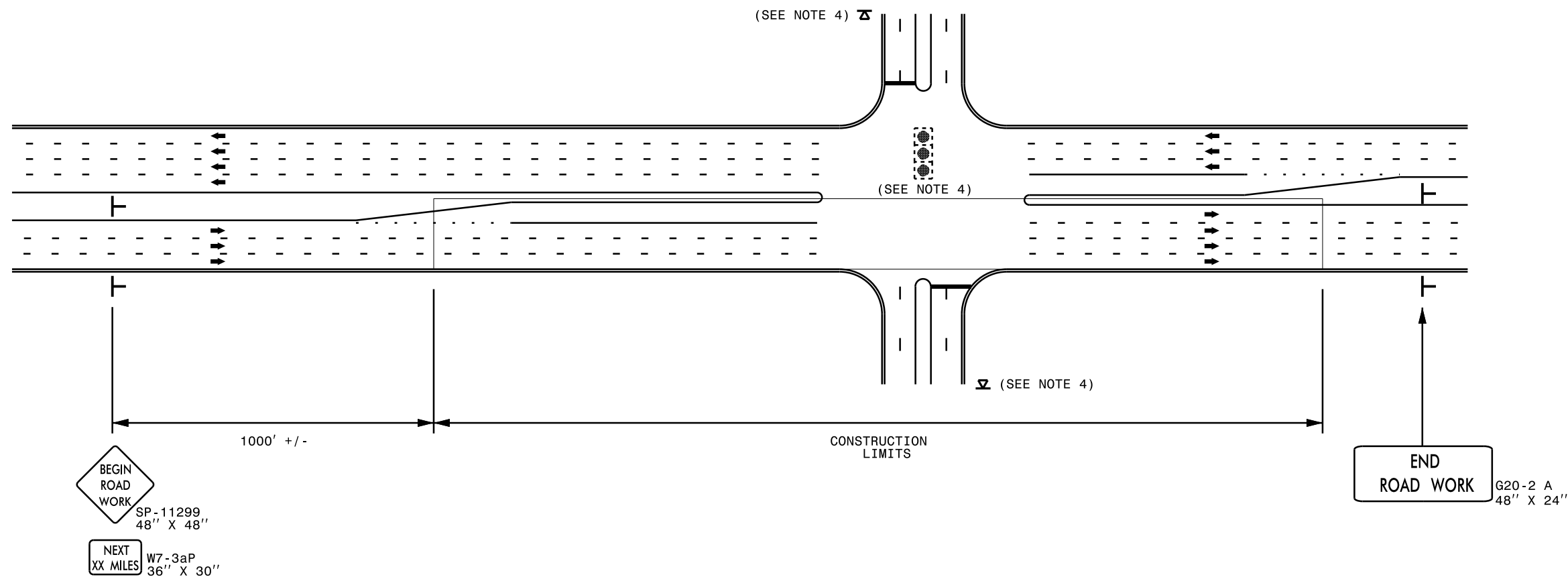
SUMMARY OF QUANTITIES

PROJECT NO	COUNTY	MAP NO	ROUTE	DESCRIPTION	TYP NO	LANES	LANE TYPE	FINAL SURFACE TESTING REQUIRED	WARM MIX ASPHALT REQUIRED	LENGTH MI	WIDTH FT	0" TO 2" MILLING SY	SURFACE COURSE, S9.5B TONS	ASPHALT BINDER FOR PLANT MIX TONS	2'-6" CURB & GUTTER (REMOVE-REPLACE) LF	CONC VALLEY GTR (REMOVE - REPLACE) LF	ADJ MANHOLE EA	ADJ METER OR VAL BOX EA
2016CPT.02.08.10741.6	Pitt	1	US-264-ALT	RESURFACING US264-ALT FROM US13 TO NC11	1	5	MU	NO	NO	1.75	VAR	69,100	8,200	492	150	24	2	2
TOTAL FOR MAP NO. 1										1.75		69,100	8,200	492	150	24	2	2
TOTAL FOR PROJ NO. 2016CPT.02.08.10741.6										1.75		69,100	8,200	492	150	24	2	2
GRAND TOTAL										1.75		69,100	8,200	492	150	24	2	2

THERMOPLASTIC AND PAINT QUANTITIES

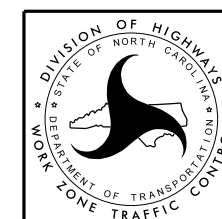
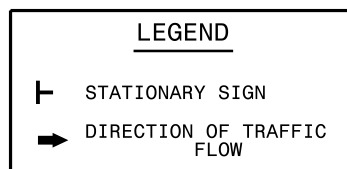
PROJECT NO	COUNTY	MAP NO	ROUTE	DESCRIPTION	TYP NO	LANES	LANE TYPE	LENGTH	WIDTH	4399000000-N	4413000000-E	4686000000-E	4695000000-E	4710000000-E	4721000000-E	4725000000-E	4905000000-N	
										TEMPORARY TRAFFIC CONTROL LS	WORK ZONE ADVANCE/GENERAL WARNING SIGNING SF	THERMO PVT MKG LINES 4" 120 MILS LF	THERMO PVT MKG LINES 8" 90 MILS LF	THERMO PVT MKG 24" 120 MIL LF	THERMO PVT MKG CHARACTER 120 MILS EA	THERMO PVT MRK SYM 90 MILS EA	SNOWPLB PVT MARKER EA	
2016CPT.02.08.10741.6	Pitt	1	US-264-ALT	RESURFACING US264-ALT FROM US13 TO NC11	1	5	MJ	1.75	VAR	1	519	27,641	225	225	7	92	510	
TOTAL FOR MAP NO. 1																		
TOTAL FOR PROJ NO. 2016CPT.02.08.10741.6																		
								1.75		1	519	27,641	225	225	7	92	510	
								1.75		1	519	27,641	225	225	7	92	510	

URBAN / SUBURBAN WORKZONES



NOTES:

- 1) 48" x 48" SIZED SIGNS (SP- 11299) MAY BE REDUCED TO 36" X 36" ON ROADWAYS WITH SPEED LIMITS OF 40 MPH OR LESS.
- 2) MOUNT SIGNS THAT ARE LARGER THAN 10 SQUARE FEET IN AREA ON TWO OR MORE WOOD OR U-CHANNEL SUPPORTS. PERFORATED SQUARE TUBING SUPPORT SYSTEMS MAY SUPPORT LARGER AREAS ON A SINGLE SUPPORT. FOLLOW MANUFACTURER'S RECOMMENDATIONS. THESE SYSTEMS SHALL BE NCHRP 350 COMPLIANT AND NCDOT APPROVED.
- 3) ADVANCE WARNING SIGNS NOT REQUIRED ON NON-SIGNALIZED SIDE STREETS.
- 4) MAY USE LAW ENFORCEMENT TO CONTROL TRAFFIC AT SIGNALIZED INTERSECTIONS AS DIRECTED BY THE ENGINEER. PROVIDE PORTABLE "ROAD WORK AHEAD" (W20-1) SIGNS 500' IN ADVANCE ALONG BOTH APPROACHES FROM THE SIDE STREETS WHEN PAVING PROCEEDS THROUGH THE INTERSECTION.
- 5) LATERAL CLEARANCE AT ALL SIGN LOCATIONS SHALL BE 2' AS MEASURED FROM THE EDGE OF PAVEMENT OR THE FACE OF THE CURB. WHEN UNABLE TO OBTAIN THE LATERAL CLEARANCE WITHIN THE MEDIAN AREA USE SHOULDER MOUNTS ONLY.
- 6) SIGN MOUNT LOCATIONS SHALL NOT BLOCK SIDEWALKS OR DRIVEWAYS.
- 7) IF STATIONARY GENERAL WARNING SIGNS ARE USED, THEY WILL BE PAID FOR PER SECTION 104 OF THE NCDOT STANDARD SPECIFICATIONS AS EXTRA WORK.
- 8) IF MILLED AREAS ARE NOT PAVED BACK BY THE END OF THE WORK DAY, PORTABLE SIGNS SHALL BE USED TO WARN DRIVERS OF THE PRESENT CONDITIONS. THESE ARE TO INCLUDE, BUT NOT LIMITED TO "ROUGH ROAD" W8-8, "UNEVEN LANES" W8-11, "GROOVED PAVEMENT" W8-15 w/MOTORCYCLE PLAQUE MOUNTED BELOW. THESE ARE TO BE DOUBLE INDICATED ON MULTI-LANE ROADWAYS WITH SPEED LIMITS 45 MPH AND GREATER WHERE LATERAL CLEARANCE CAN BE OBTAINED WITHIN THE MEDIAN AREAS. THESE PORTABLE SIGNS ARE INCIDENTAL TO THE OTHER ITEMS OF WORK INCLUDED IN THE TEMPORARY TRAFFIC CONTROL (LUMP SUM) PAY ITEM.



**RESURFACING ADVANCE
WARNING SIGNS FOR
URBAN / SUBURBAN
FACILITIES**